

## Parental Insight

### Virtual Witness Program

Our Virtual Witness' receive up to \$500 for significant information<sup>1</sup>.

Your personally observed, legally obtained; Pictures, Video and other documentation may prevent the following:

- Cyber-bullying
- Cheating
- Bullying
- Extortion
- Drinking while driving
- Texting while driving
- Fighting and harassment
- Drug use and its distribution
- Radical group participation
- Concealing and distribution of weapons
- Racial/religious intimidation
- Violence of any kind towards another
- Suicide
- Smoking
- Stealing

**Students/Individuals** interested in receiving instant money?

Anonymously tell us what you know.

Observe students in school, in a chat room or any place being bullied.

**Get the facts, and get-paid!**

<sup>1</sup>Restrictions do apply

**Parents** seeking to add an anonymous incentive to find evidence on a particular bully are encouraged to apply to the Virtual Witness Program.

**Family** members seeking to pay top dollar to anyone that can produce evidence of maltreatment of any person in the care of someone else are encouraged to apply to the Virtual Witness Program

#### **Parents Benefit:**

- Early intervention by factual discovery- Seeing is believing!
- Control of your child before law-enforcement does
- Revelation of missed opportunity to parent
- Opportunity to understand
- Redeems time to intervene
- Prevention of premature death (parent stress and child suicide)
- Parental responsibility directed towards resolving unsettling truths
- Resources for help and counseling

#### **Community Benefit**

- Put the onus of parenting back on the parent
- Assist parents before they loose control
- Adopt a problem child through information and support
- Help a parent get what is best for their case against a bully- EVIDENCE

## **How does it work?**

**Parental Insight Virtual Witness Program is designed for the student or concerned individual of conscience, wanting to help another person through parental involvement.**

**Parental Insight's unique methodology places the focus on the bystander for resolving bullying.**

Students submit an anonymous tip for up to \$500 for credible information.\*



1. By calling 1-888-364-0316.
2. E-mail us at [virtualWitness@parentalinsight.org](mailto:virtualWitness@parentalinsight.org)
3. Upload your video to [virtualwitness@parentalinsight.org](mailto:virtualwitness@parentalinsight.org)

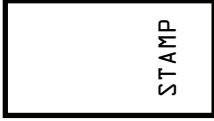
Parents either accept or reject the student's information privately via [www.parentalinsight.org](http://www.parentalinsight.org)

Parental Insight, Inc.  
3430 E. Jefferson Suite 322  
Detroit, Mi. 48207  
Phone: 313-432-0188 Fax: 313-579-2779  
Email: [info@parentalinsight.org](mailto:info@parentalinsight.org)

*\*Information must be sent using our encrypted platform.  
Restrictions and eligibility requirements do apply.*

Parental Insight Inc.  
3430 East Jefferson, Suite 322  
Detroit, MI 48207

1-888-364-0316  
www.Parentalinsight.org

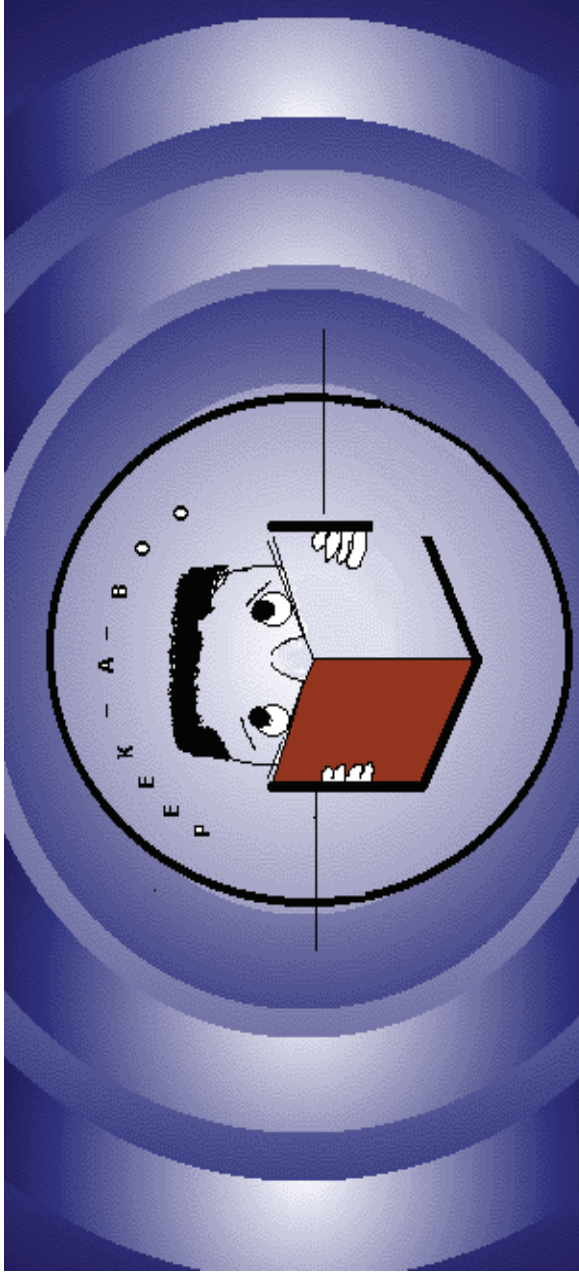


Name \_\_\_\_\_

Address \_\_\_\_\_

City \_\_\_\_\_ State \_\_\_\_\_ zip \_\_\_\_\_

An insightful approach to extending parental capability into your child's learning environment®



An insightful approach to extending parental capability into your child's learning environment®

# Parental Insight Inc.

## Mission:

To operate an organization exclusively for educational, charitable, scientific, medical, literary purpose and for the promotion and advancement of the arts, to do all other acts necessary to carry out the aforesaid purposes.

## Focus:

Develop exciting and successful partnerships between families, educators, and family counselors by extending parental capability into the classroom through innovative and effective information management solutions.

\*\*\*\*\*

## Membership Information

(Call 1-888-364-0316 or visit [www.parentalinsight.org](http://www.parentalinsight.org) we accept VISA,MC,AMEX, Certified Checks)

**Regular Member**-Any parent/guardian or extended family member, who shares the focus of this organization by the "active" participation therein.

**\$450.00/yr**

\*\*

**Corporate Member**-Any business willing to share the focus of this organization by sharing its "qualified" resources <sup>1</sup> for parent/guardian enrichment, so that the link between education and a career is not lost.

**\$5,450.00/yr**

<sup>1</sup> People, technical, equipment donation or use, adopt a School, adopt a class, sponsor an activity, financial gifts.

\*\*

**Community Member**- Any community or neighborhood coalition seeking to embrace a child or group of children to act in behalf of his/her parent/guardian <sup>2</sup> to "collectively" share the focus of this organization by the group participation therein.

**\$2,450.00/yr**

<sup>2</sup> Written approval of parent/guardian necessary.

\*\*

**Associate Member**- Any individual who shares the goals and vision of this organization by sharing his/her qualified resources <sup>3</sup>, but does not participate in counseling sessions.

**\$450.00/yr**

<sup>3</sup> Professional skills and monetary gifts accepted to organization as a whole.